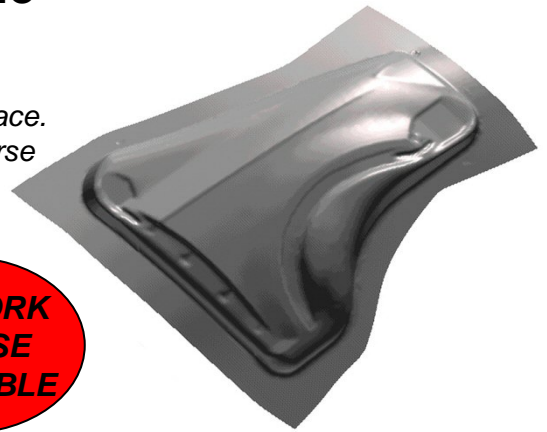


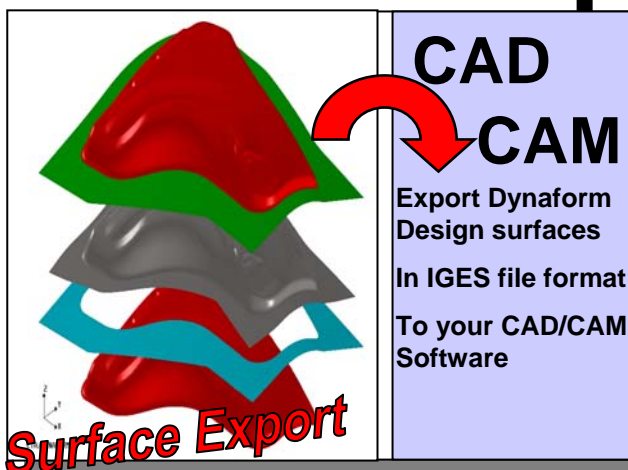
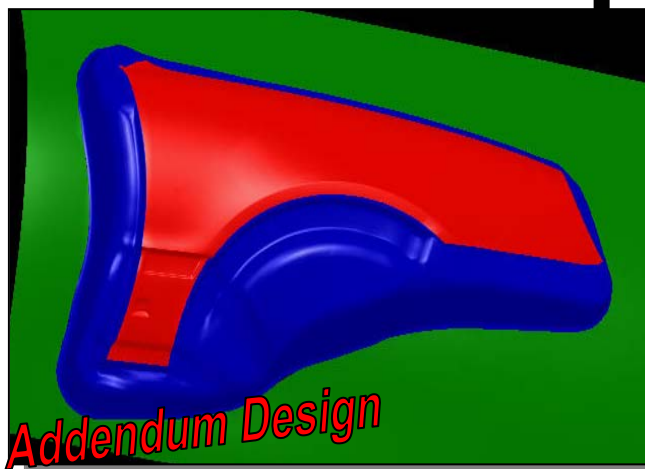
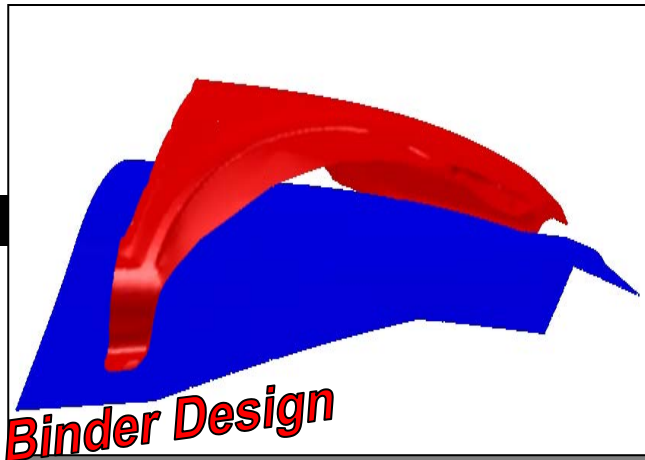
DFE (Die Face Engineering) Module

DYNAFORM's DFE module is a complete die face engineering process used to create the tooling design, including binder and addendum, from the part geometry within the DYNAFORM interface. The DFE module contains a set of automated tools such as reverse trimming functions, part-tipping, and binder and addendum generators to guide the engineer.



**NETWORK
LICENSE
AVAILABLE**

DIE DESIGN MADE EASY



FILLET

The fillet function allows the user to quickly fillet hard, unformable angles in the part geometry to a user defined radius.

REVERSE TRIMMING

Several automated functions fill incomplete part geometry for forming. Provides both mesh and surface of filled areas.

DRAW DEPTH / UNDERCUT

Graphic display of part draw depth and undercut.

TIPPING

The tipping function automatically places the part into die position from design position.

BINDER GENERATOR

Automatic and manually created binders can be generated based on part geometry. Binders can be edited and morphed based on user input to meet design criteria.

ADDENDUM GENERATOR

This sophisticated function generates a series of profiles based on the size, depth, and material of the part. The profiles are then surfaced and meshed to create a complete addendum for forming. Profiles can be edited using an interactive graphic profile editing interface or by PO line morphing.

MORPHING

Line morphing, surface morphing, and mesh morphing are all offered in the DFE module to easily manipulate, PO lines, reverse trimming functions, addendum designs, and binders.

SURFACE EXPORT

Once you are satisfied with the results of Dynaform's Virtual Die Tryout. The Dynaform user has the option to export surfaces created by the DFE design out into your CAD/CAM System the